



Completed: Dauntless/Admirable/Exultant Temporary Water Main Alignment (Phase 1)



(For illustrative purposes only: pipes not to scale, location approximate)

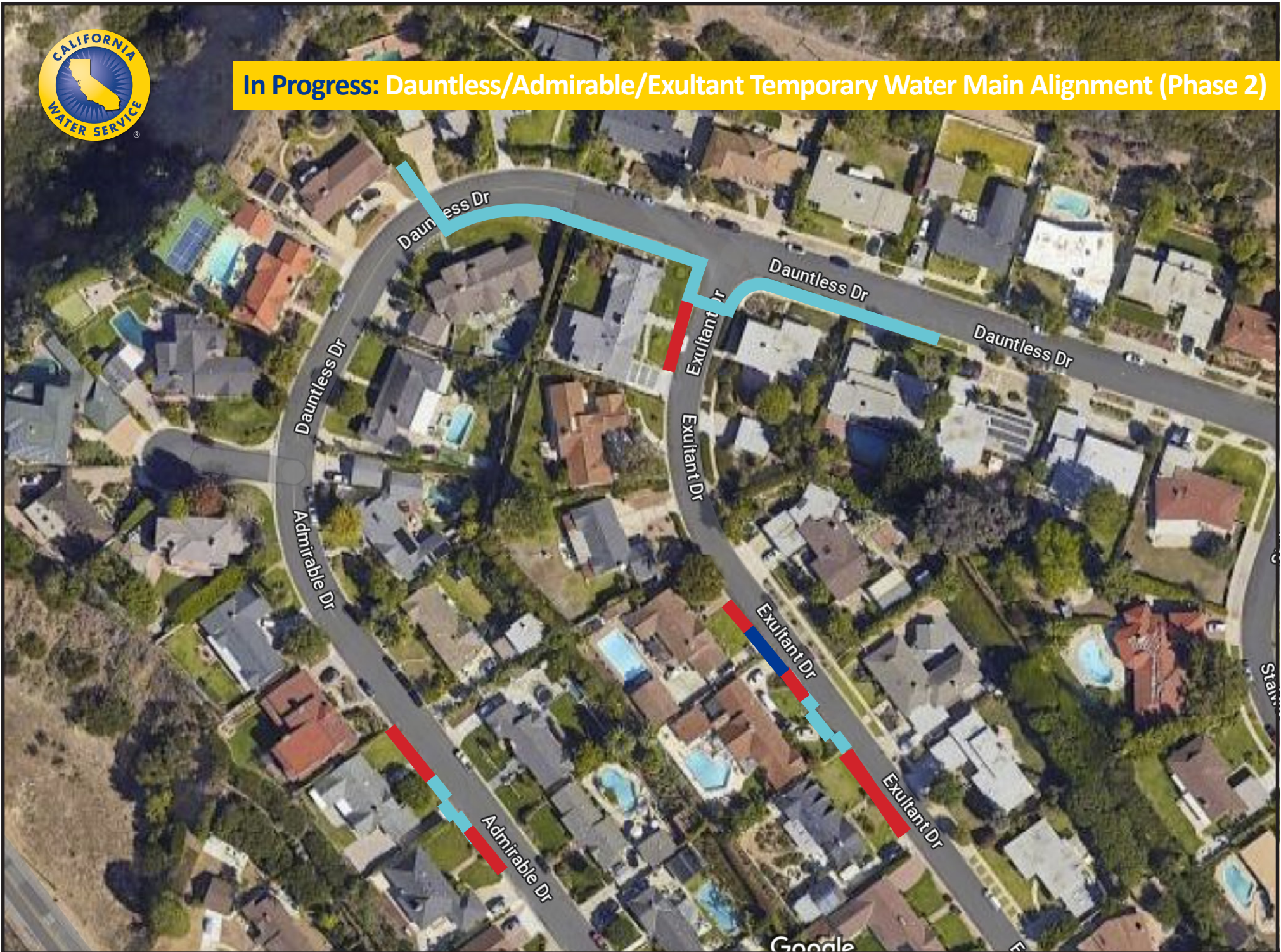
— Above-ground

— Underground

Rev. 6.13.24



In Progress: Dauntless/Admirable/Exultant Temporary Water Main Alignment (Phase 2)



(For illustrative purposes only: pipes not to scale, location approximate)

-  Existing main replaced (phase 1)
-  Above-ground (phase 2)
-  Underground (phase 2)



Ocean View
ding School

Callie Bell
Performance Horses

Completed: PBCA Clovetree Place Water Main Alignment



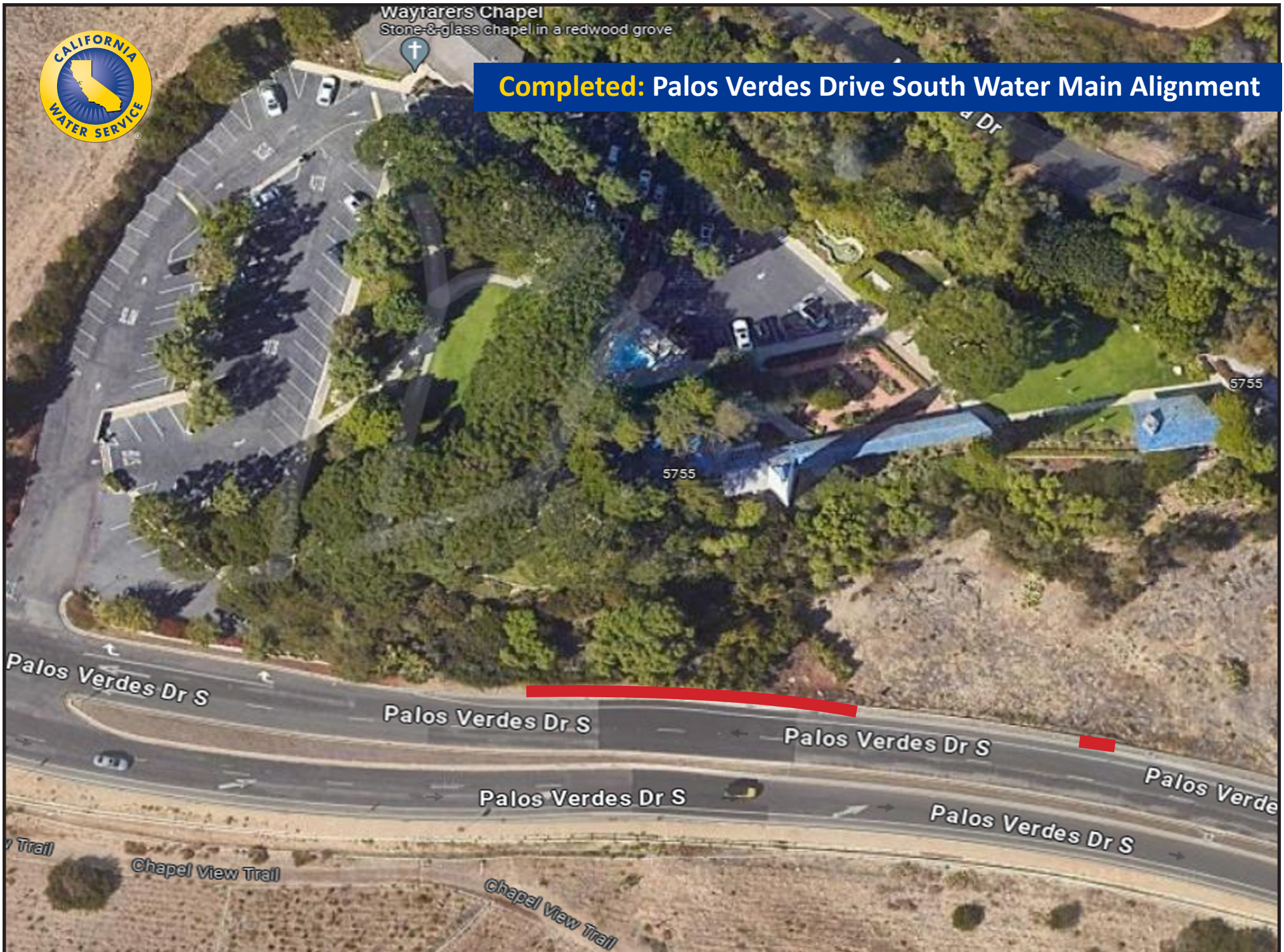
(For illustrative purposes only: pipes not to scale, location approximate)

— Above-ground — Underground



Wayfarers Chapel
Stone-&-glass chapel in a redwood grove

Completed: Palos Verdes Drive South Water Main Alignment



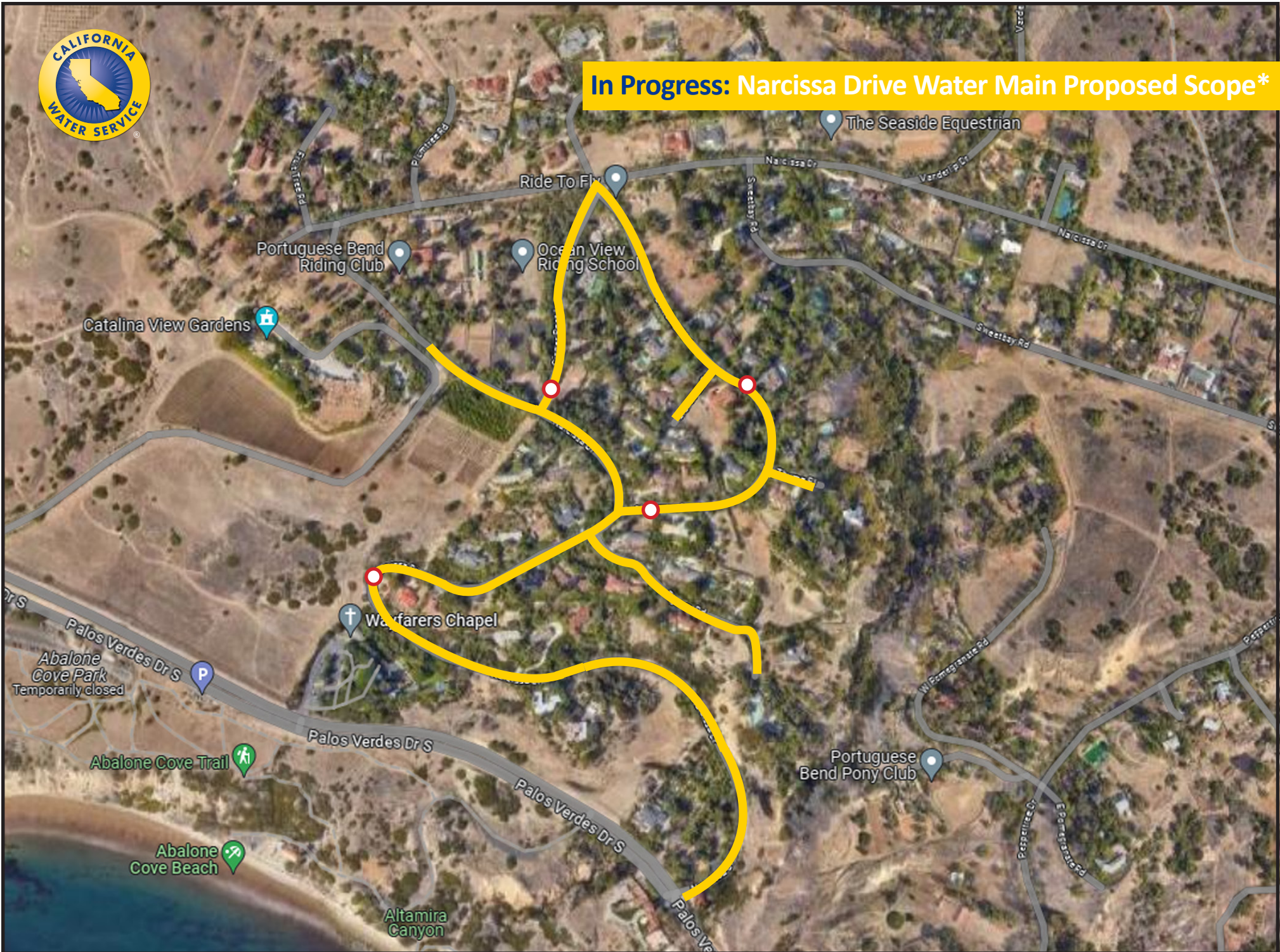
(For illustrative purposes only: pipes not to scale, location approximate)

 Above-ground

Rev. 4.16.24



In Progress: Narcissa Drive Water Main Proposed Scope*



(For illustrative purposes only: pipes not to scale, location approximate; *scope subject to change based on investigative results)

Scope

Swing joint



Completed: Emergency Portable Booster Connection

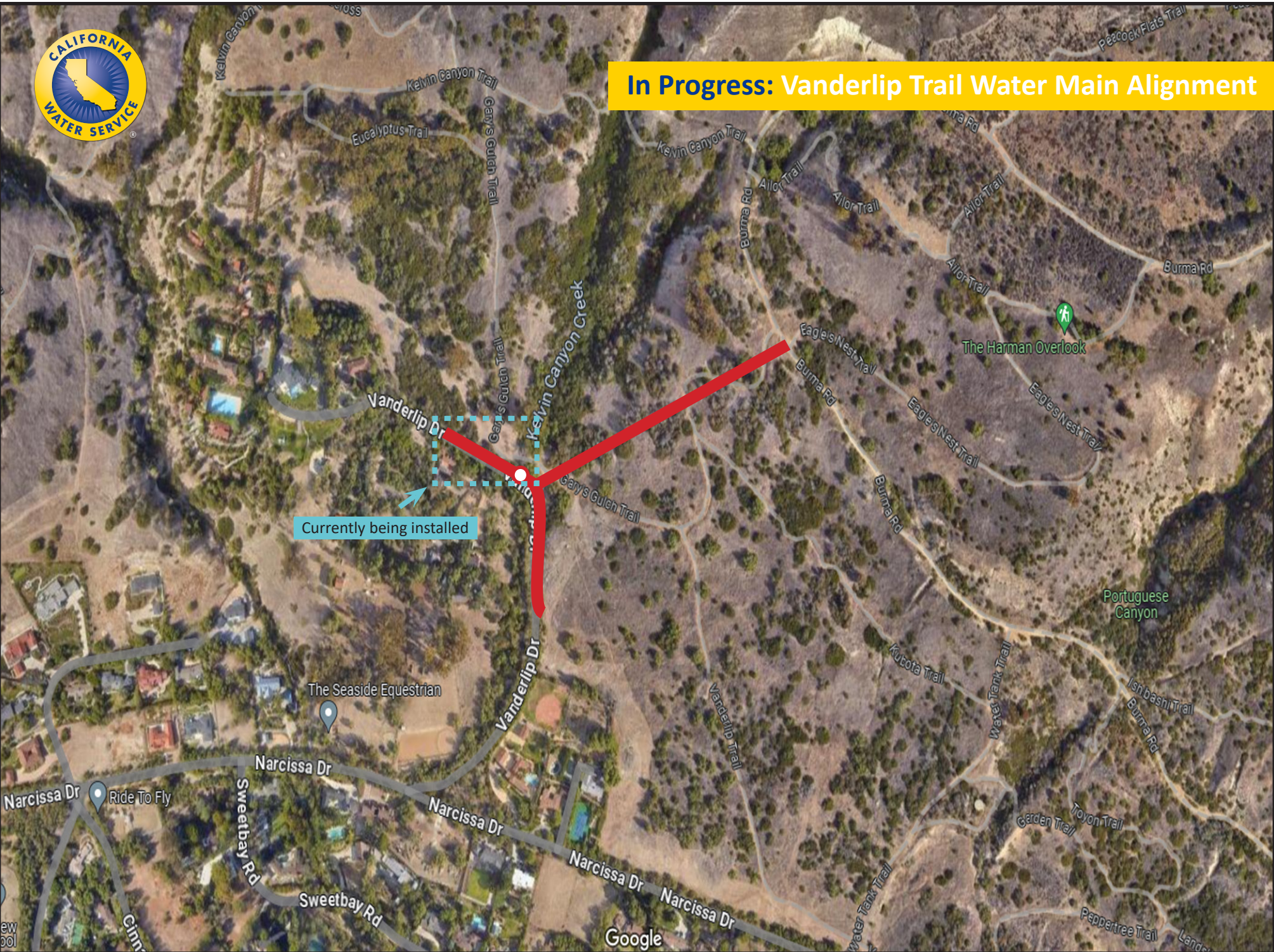


(For illustrative purposes only: pipes not to scale, location approximate; *scope subject to change based on investigative results)

Booster connection



In Progress: Vanderlip Trail Water Main Alignment



Currently being installed

— Above-ground ○ Swing joint

(For illustrative purposes only: pipes not to scale, location approximate)

