

# Klondike Canyon Landslide

---

September 6, 2023

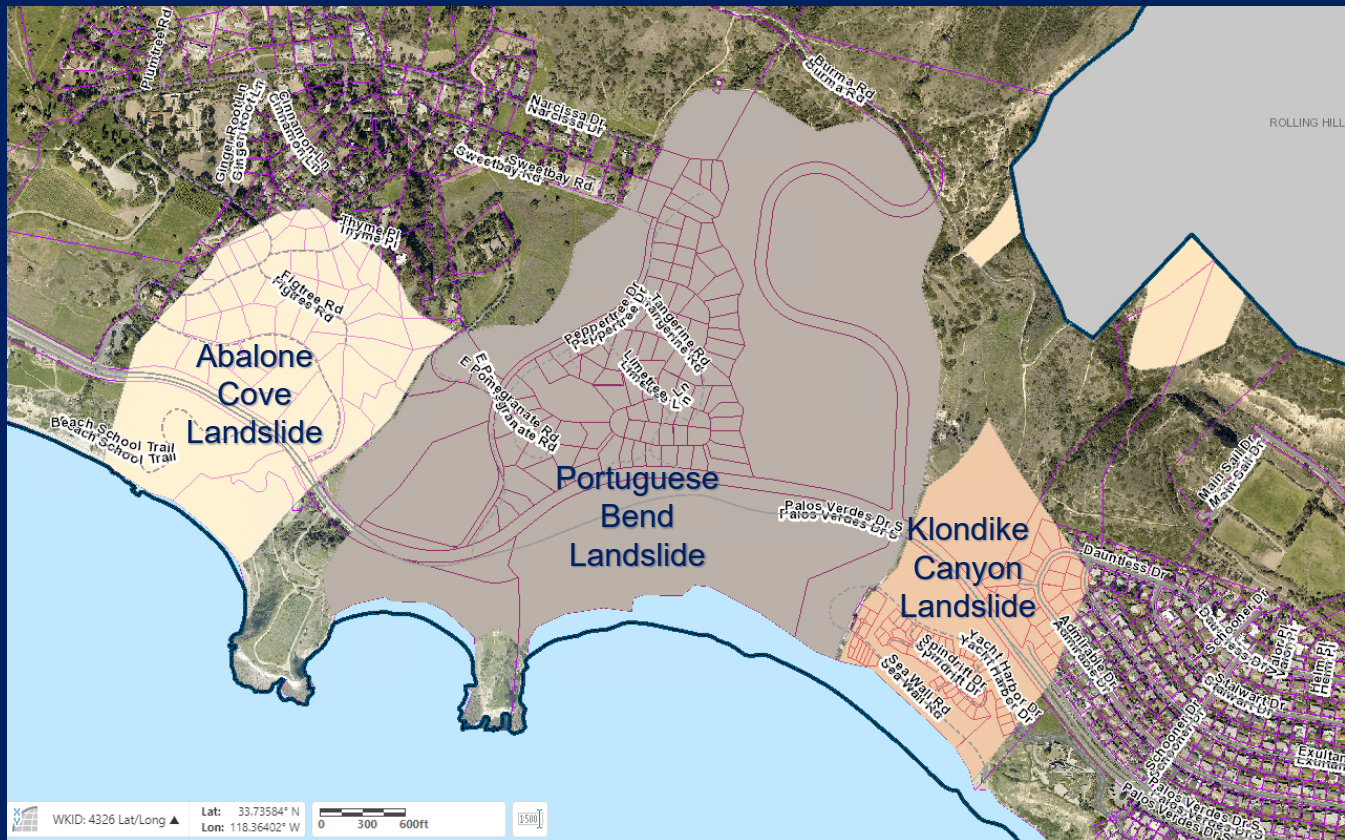




# Landslide Complex

## Landslide Complex:

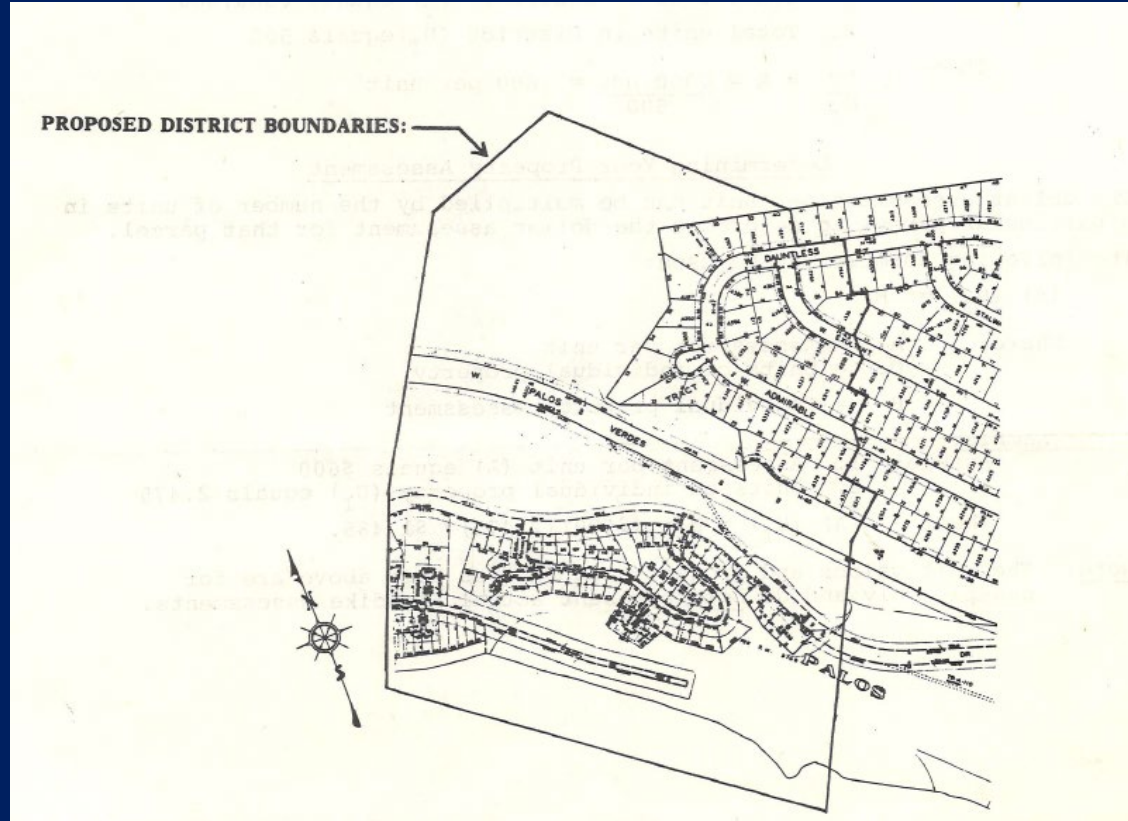
- Abalone Cove
- Portuguese Bend
- Klondike Canyon





# Klondike Canyon GHAD

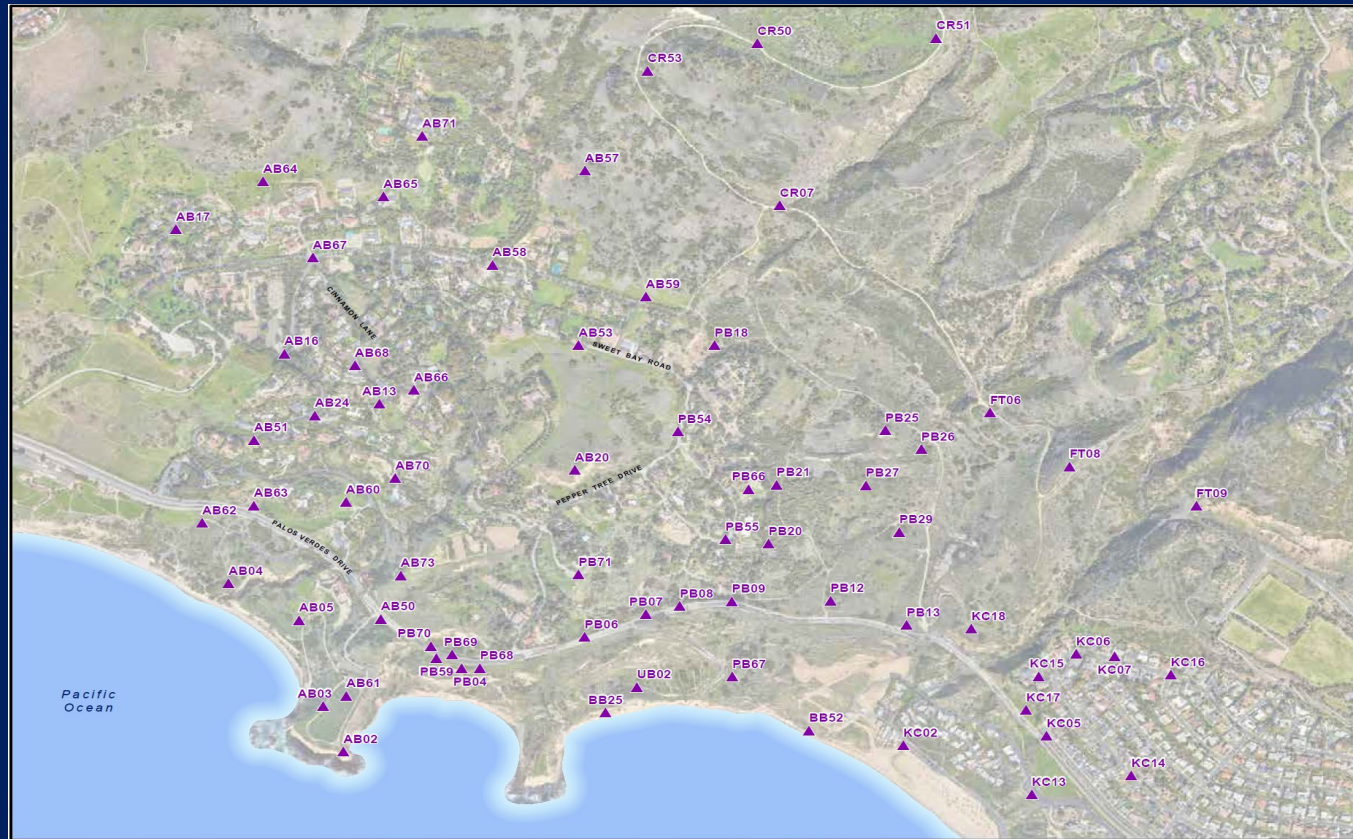
- Formed:  
March 16, 1982
- Purpose:  
Improvements  
Necessary to  
Eliminate Further  
Movement of the  
Klondike Canyon  
Landslide





# Movement Monitoring

GPS Monitoring Locations



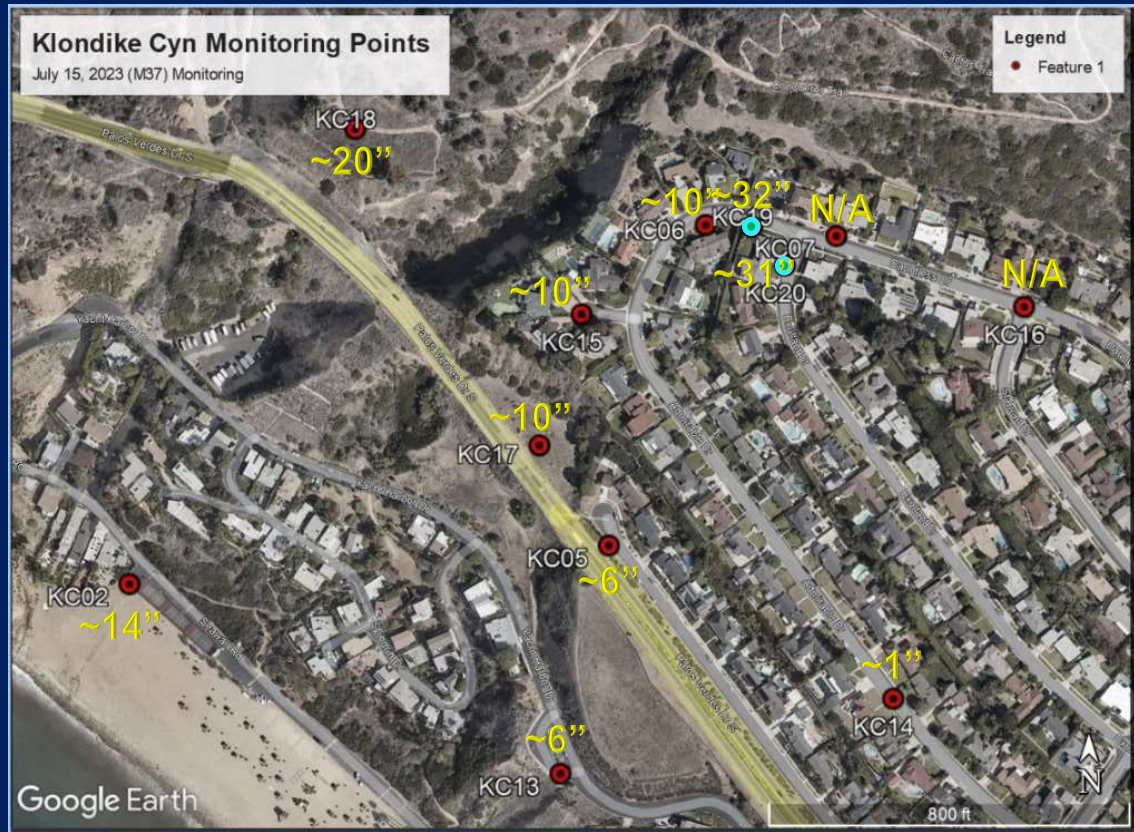


# Klondike Canyon Monitoring

## Avg Movement Per Year\*

- 2007 to 2018 = 0.5"
- 2018 to 2022 = 1" - 2"  
(KC02 = 2.75")  
(KC18 = 4")
- 2022 to 2023  
Annualized = See Map

\*Rate of Movement Varies  
Depending on Location & Year





# Utility Company Coordination

---

- Water: California Water Service (Cal Water)
  - Electricity: Southern California Edison (SCE)
  - Gas: Southern California Gas Company (SoCalGas)
  - Sanitary Sewer: Los Angeles County Public Works & Los Angeles County Sanitation Districts
- 
-



# Building & Safety

---

- Building Inspection
  - Yellow Tag
  - Red Tag
- 
-

# Contact Information



Ara Mihranian, City Manager: [aram@rpvca.gov](mailto:aram@rpvca.gov), 310-544-5202

Ramzi Awwad, Public Works Director: [rawwad@rpvca.gov](mailto:rawwad@rpvca.gov), 310-544-5275

David Rasor, Building Official: [drasor@rpvca.gov](mailto:drasor@rpvca.gov), 310-544-5239



# Thank You



Questions?